

Stepping Stone

**Safety and confidence
in every step of your way.**





S & P NERO STONE

Say Goodbye to conventional Staircases

Stairs are used in lieu of elevators in buildings or houses and also play a very important role as emergency exit areas in office buildings and commercial spaces. Until today, staircases were built using marbles and granite, which are expensive, require on-site cutting and finishing, leading to a lot of wastage. They need a lot of manual labour for handling and fixing. Besides, they can stain easily, the surface may be slippery and they can chip or crack during use. They are difficult to replace with same shade and texture if broken, besides also needing constant maintenance.



Get the Johnson Endura Stepping Stone Advantage!

The Johnson Endura Stepping Stone range is a revolutionary way to build staircases with step tiles and risers. The result of an unquantifiable amount of time spent researching the very many possibilities in the world of staircases.

Here's why it makes more sense to build your Staircases with Endura Stepping Stone

Safety for All

These full-bodied modular tiles come with bull nosing and tread lines that make them skid-resistant and much more safer than conventional stairs.

Faster Installation

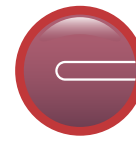
No more handling issues. No more labour-intensive on-site installations, no more wastage costs. Endura Stepping Stone can be easily and speedily installed on site.

Long Lasting & Easy on Maintenance

Chipped and worn out staircases, constant need for polishing and repairs, are all things of the past. Endura Stepping Stone are full-bodied vitrified tiles, which means they absorb very low water and are impervious to weather or wear and tear induced damage. Fit them and forget them for years of trouble free performance.



less than 0.05%
Water Absorption



Bull Nosing



Anti Skid



High Flexural
Strength



Robust, durable
tiles than
conventional options



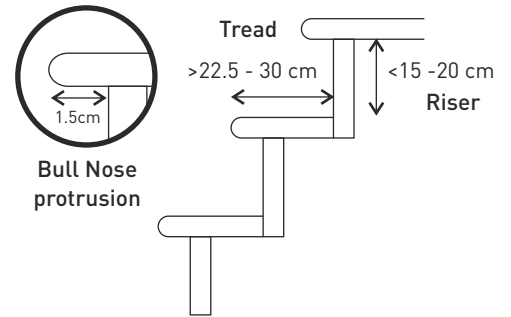
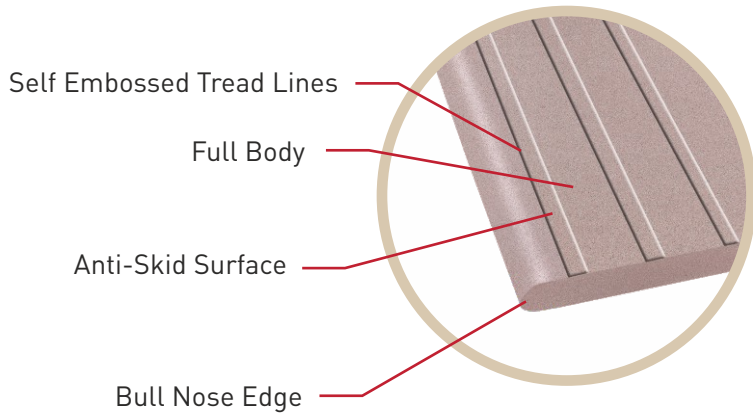
23 Beautiful
Shades



Faster
Installation

The Endura Stepping Stone Advantage.

Features	Benefits
Endura Body Vitrified Step Tiles & Risers	Highly durable, ideal for heavy traffic and commercial areas.
Ready to Install Tiles	Easy and speedy installation. Say goodbye to cumbersome cutting and finishing on site.
Embossed Tread Lines	Provides extra grip for higher safety near step edge.
Bull Nosing Tiles	Unlike other step tiles, Endura Stepping Stone is India's first bull nosed tile, which makes the staircase safer and comfortable to step on. Bull nosing helps to prevent chipping from sharp edges, minimizes impact injuries on barefoot movement and also improves the overall aesthetics of the stairs.
12mm/15mm Thickness	Provides higher strength and durability as desired in big size slabs. An assurance to replace natural stones in a confident way.
Lowest Water Absorption of <math><0.05\%</math> along with Enhanced Stain Resistance.	Even the strongest of dyes - methylene blue cannot stain Endura Stepping Stone. Impervious surface ensures ease of cleaning.

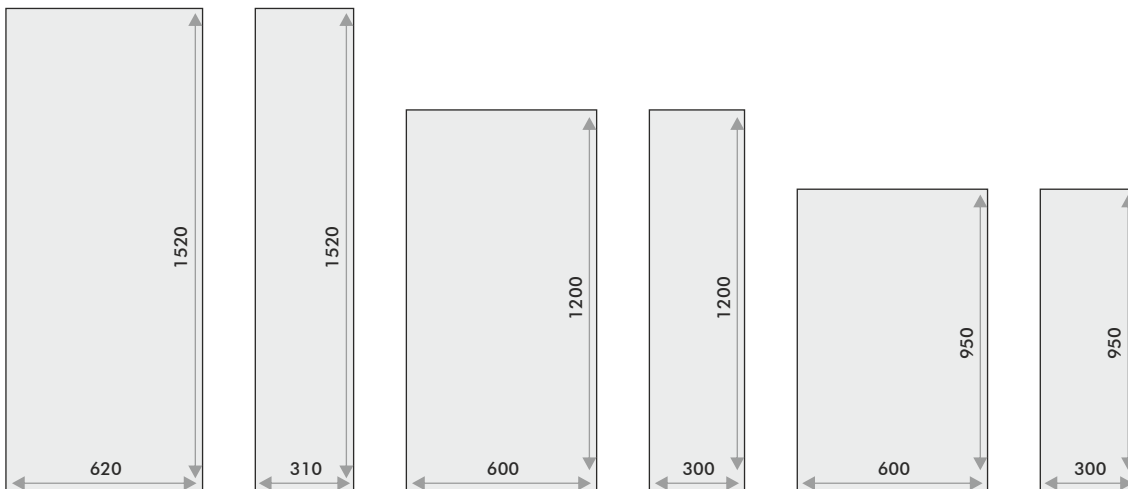


Extensions for wider stairs

Contrast Cut piece



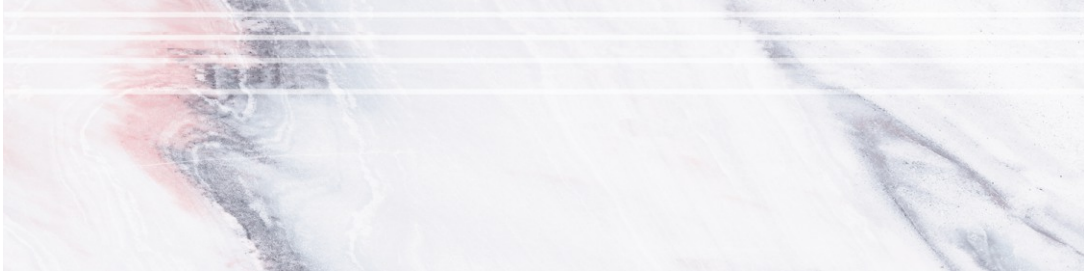
12MM



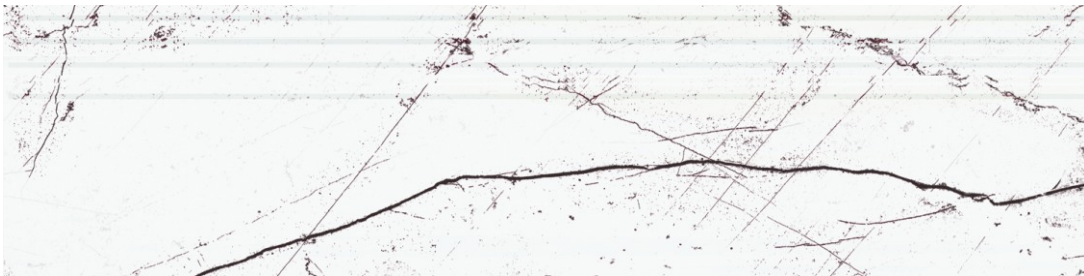
Disclaimer in Stepping Series

All mentioned shades are available in 12mm 600x1200 & 300x1200. S&P 5 designs available in 30x95 & 60x95
 31x152 & 62x152 will be as make to order basis with MOQ of 1500 sq.mtr.
 Plain Series Only in 300x1200 & 600x1200 Step & Riser

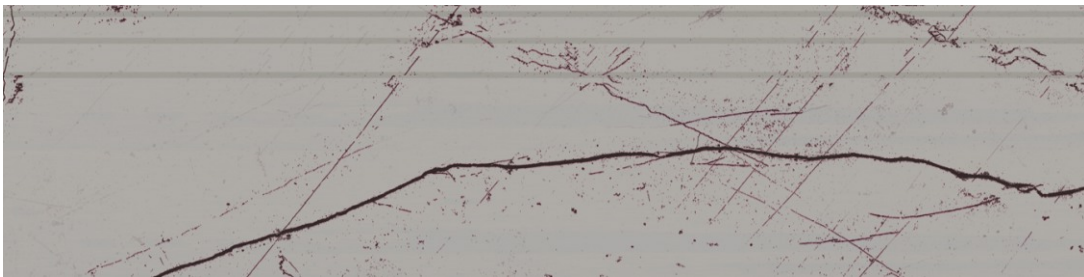
Step Tiles 30x120 cm
FULL BODY MARBLE & GRANITE SERIES



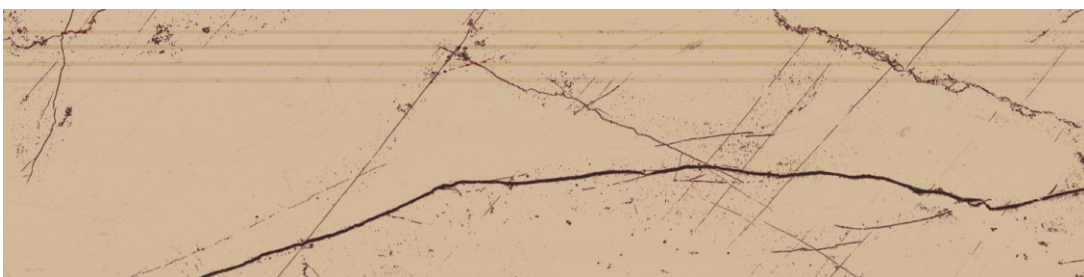
STONE BIANCO MARBLE



STONE BIANCO GRANITE



STONE GREY GRANITE



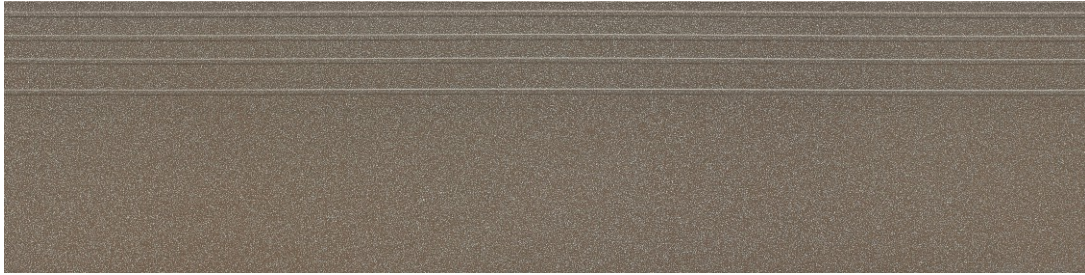
STONE LIGHT BEIGE GRANITE





STONE BIANCO
GRANITE

Step Tiles 30x120 cm
FULL BODY S & P COLORS



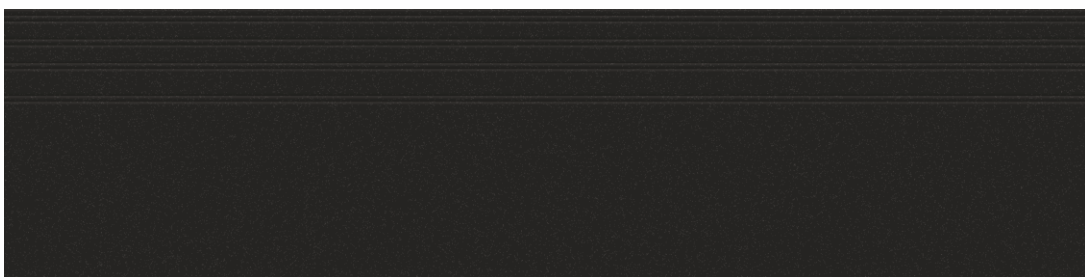
S & P COFFEE



S & P DARK BEIGE



S & P GREY

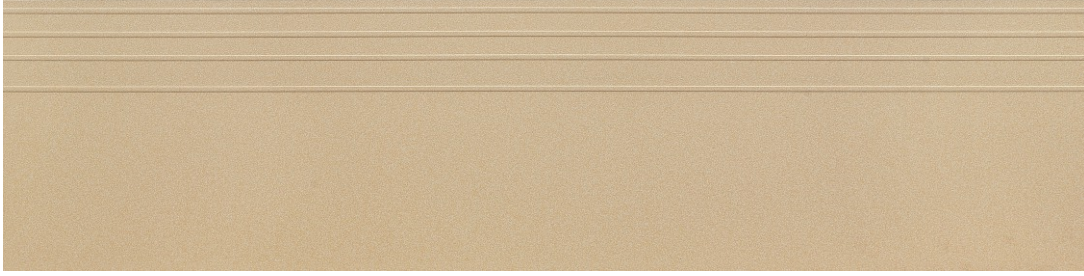


S & P JET BLACK

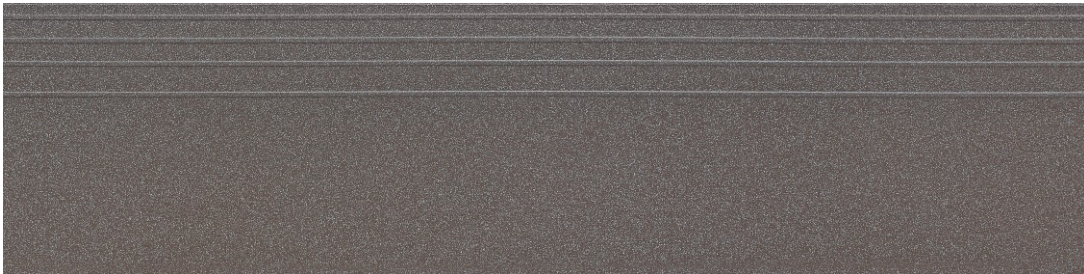


S & P KOTA





S & P LIGHT BEIGE



S & P NERO



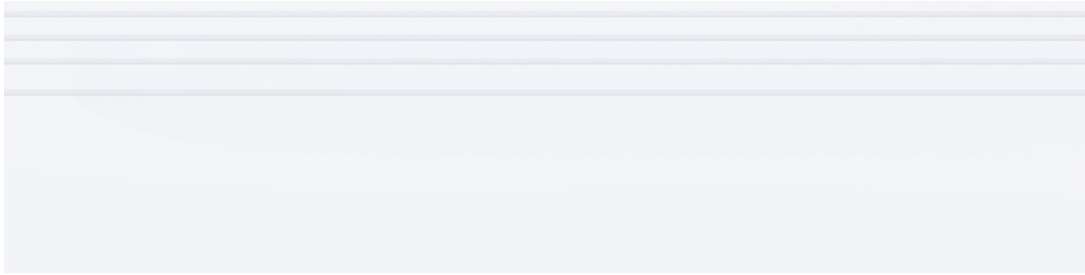
S & P SKY



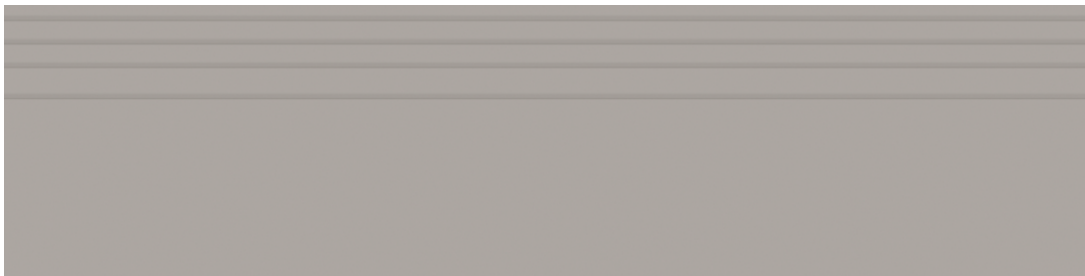
S & P WHITE



Step Tiles 30x120 cm
FULL BODY PLAIN COLORS



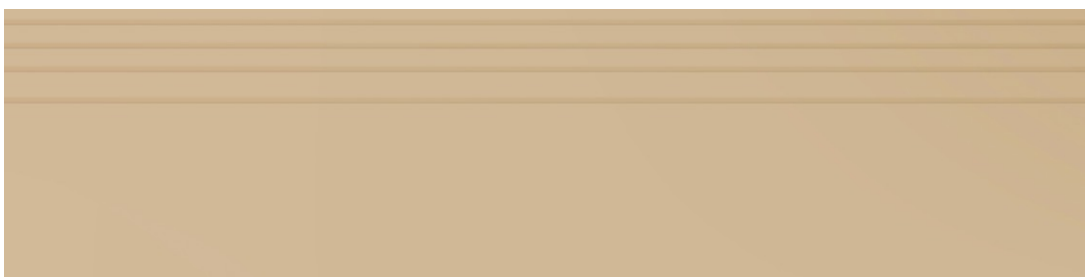
STONE BIANCO



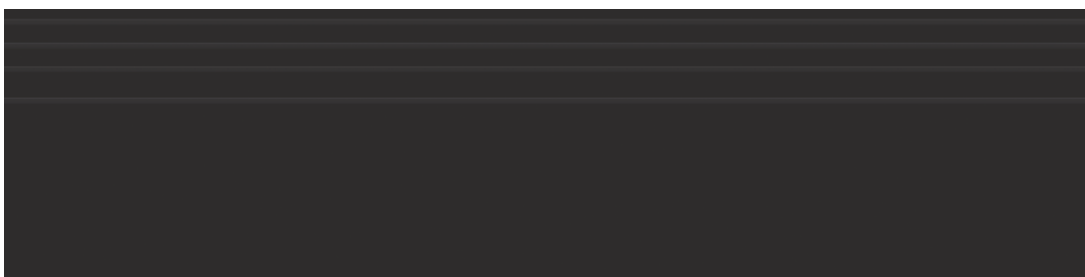
STONE GREY



STONE KOTA



STONE LIGHT BG



STONE NERO



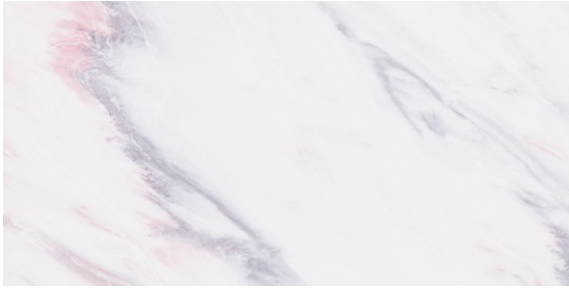


STONE SKY

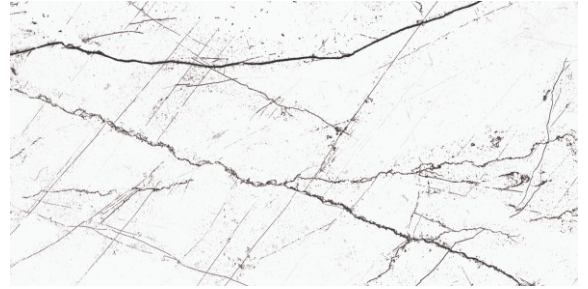


STONE LIGHT BG

Riser & Landing Area Tiles 60x120 cm FULL BODY MARBLE & GRANITE SERIES



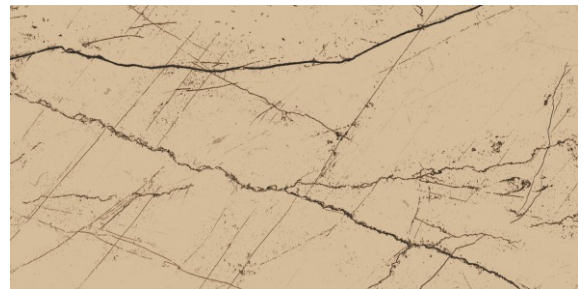
BIANCO MARBLE



BIANCO GRANITE



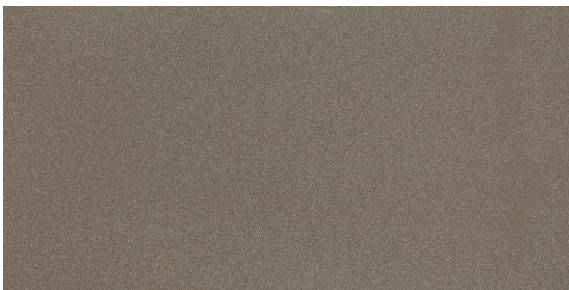
GREY GRANITE



LIGHT BEIGE GRANITE



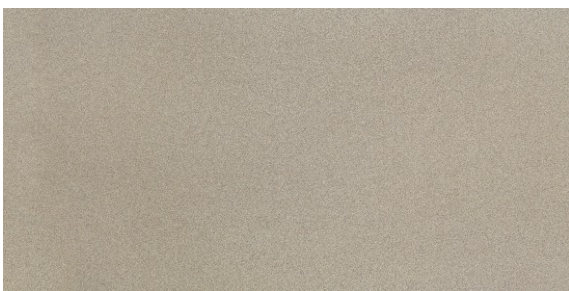
FULL BODY S & P COLORS



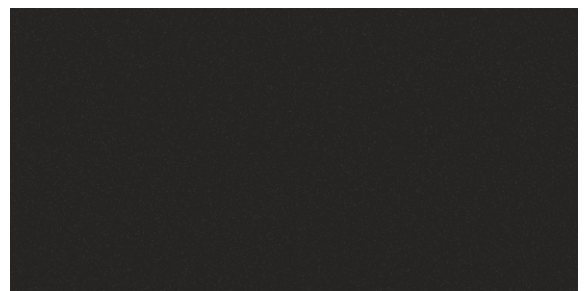
S & P COFFEE



S & P DARK BEIGE



S & P GREY

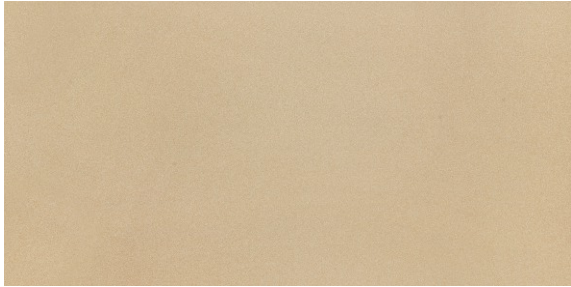


S & P JET BLACK





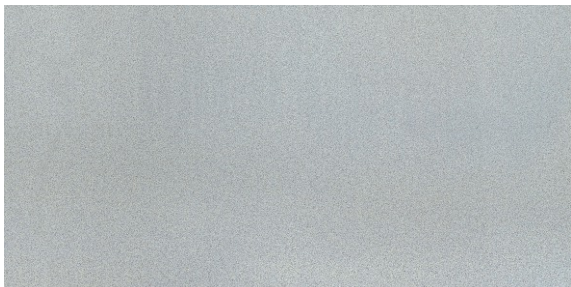
S & P KOTA ● P



S & P LIGHT BEIGE ● ● P



S & P NERO ● ● P



S & P SKY ● ● P

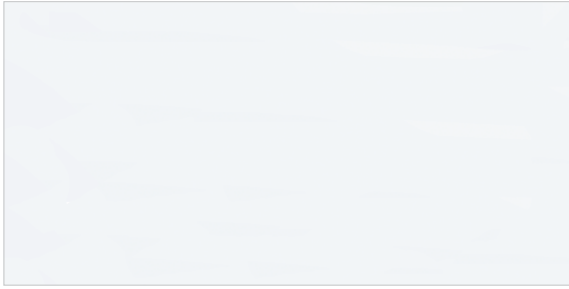


S & P WHITE ● P

Riser & Landing Area Tiles 60x120 cm



NERO



BIANCO ● P



GREY ● P



KOTA ● P



LIGHT BEIGE ● P



NERO ● P



SKY ● P

Recommended Stair Step Dimensions as per National Building Code, BIS , SP : 7

Type of Building	Minimum Width	Minimum Tread	Maximum Riser
Residential buildings	100 cm	25 cm	19 cm
Residential hotel buildings	150 cm	30 cm	15 cm
Assembly buildings like auditoria, theatres and cinemas	200 cm	30 cm	15 cm
Educational building	150 cm	30 cm	15 cm
Institutional buildings	200 cm	30 cm	15 cm
All other buildings	150 cm	30 cm	15 cm
2 storeyed - LIG Urban Areas	60 cm	22.5 cm	20 cm
3 or more storeyed - LIG Urban Areas	75 cm	25 cm	20 cm

Note: Straight flights of steps are preferred by ambulant disabled people. Steps should be of a consistent height and depth throughout the stair. Stairs shall be constructed of non-combustible materials throughout.

ADVANTAGES OF ENDURA STEPPING STONE USAGE vs GRANITES & NATURAL STONES

TECHNICAL FEATURES	STEPPING STONE	GRANITE	KOTA STONE
Eco Friendly	Environment friendly and adherence to ISO 14001 standards	Negative effect on Environment due to mining operations	Depend on mines. Negative effect on Environment
Vitrified Step Tiles & Risers	Endura Vitrified Product provides higher strength in 12 & 15 mm thickness	Being a natural stone, granite has its own limitations in terms of strength which might vary from lot to lot	Not Vitrified & Non Homogeneous - Multi Layer Product
Ready to Install Tiles	Pre cut, Pre-sized as per specification	Sizing and finishing to be done on site	Sizing and finishing on site
Embossed Tread Lines	In-built feature	Cannot be done, only grooves can be made which can attract dust	Grooves created on site. Increase in labor cost
Bull Nosing	In-built feature and ready to use	Created onsite with high labour costs	Create on site with increased labour cost
Lowest Water Absorption of <0.05% along with Enhanced Stain Resistance	Even the Strongest of dyes-methylene blue cannot stain Endura Stepping Stone. Impervious surface ensures ease of cleaning	Easily Stainable	Easily Stainable
Colour Options	More than 20 colours	Limited Option	Limited Option
Deep Abrasion Resistant	<120 MM ³	>1000 MM ³	>1400 MM ³
Scratch Resistant - MOH	>6	4 to 5	3 to 4
Breaking Strength N	>3500N	2500N	1400 N
Flexural Strength (N/mm2)	>38	>28	>20

VALUE PROPOSITION	Stepping Stone	Granite	Kota Stone
Product Price/sqft (12mm/15mm Thick)	120 +	150 +	60 +
Labour cost/sqft (Sizing, Polishing, Full Bull Nosing & Treads)	0	40	30
Labour cost/sqft (Application)	40	40	40
Material/sqft	65	65	65
Area (in sqft)	1000	1000	1000
*Price working as per current market practices Total Amount (in Rs)	225000	295000	195000

Frequently Asked Questions

1) Why Endura Stepping Stone?

Staircases hitherto have been at mercy of natural stones, which are cumbersome to install, slippery, and also come with a higher installation wage-cost. Endura Stepping Stone is that much-required revolution in the world of staircases, that comes with none of the above mentioned complications. Moreover their convenient size 30x120, 30x95 & 31x152 in 1.2 cm with high bull nosing and tread lines aptly meet the design requirements for staircases along with 60x120, 60x95x & 62x152 in 1.2 cm in matching colour for risers and landing areas.

2) What differentiates Endura Stepping Stone from others?

Safety and confidence are the cornerstones of Stepping Stone. They are full-bodied vitrified tiles with robust strength, antiskid and stain resistant surface providing highest durability. They're designed to help people including persons with ambulant disabilities and persons with visual impairment to negotiate steps and staircases safely and confidently.

3) What are the benefits of bull nose edges?

Endura Stepping Stone is India's first bull nosed fully vitrified step tile. The unique bull nosing makes the staircase safer and comfortable to step on. Bull nosing also helps to prevent chipping along edges and it improves the overall aesthetics of the staircase.

4) What is the purpose of embossed tread lines?

The embossed tread lines provide extra grip for higher safety for the crucial edges of the steps.

5) What are the benefits of thicker tiles?

The Endura Stepping Stone is 1.2 cm, which means it's stronger - a mandate for large-sized slabs. Thereby, being a safe, confident and assuring replacement to natural stones.

6) What are the other benefits of using Endura Stepping Stone?

Easy and speedy installation, low water absorption (<0.05%) with advanced stain resistance technology. Even strongest of dyes - methylene blue - cannot stain Endura Stepping Stone. High abrasion resistance of <120m3 provides 10 times superior surface protection over natural stone against regular wear & tear.

7) What is the best way to fix Endura Stepping Stone?

Endura Stepping Stone are best fixed using ARDEX ENDURA tile fixing adhesive. The gap between the tiles can be filled with ARDEX ENDURA grouts. ARDEX ENDURA tile fixing adhesives and grouts are available in India and are most compatible with Endura tiles.

8) What are the designs available?

Subtle salt & pepper designs, Plain colors and Granite & Marble variants to evenly compliment the theme and decor of the building.

9) Does Endura Stepping Stone conform to National Building Codes?

Yes, Endura Stepping Stone conforms to National Building Code SP : 7 of the Bureau of Indian Standards.

10) Is Endura Stepping Stone a fire resistant material? Is it suitable for fire exits in the case of an emergency?

Yes, Endura Stepping Stone is a fire-proof, non-combustible, high temperature material. It will not burn or release any toxic fumes in the event of any fire.

TECHNICAL SPECIFICATIONS

S. No.	Test Description	ISO 13006:2018 / EN 14411 Group Bla Requirement	IS - 15622:2017 Group Bla	Johnson Endura Stepping Stone / Riser	Test Method
A) Dimension Quality		Whichever is less applicable. Rectified edge		12mm	
1	Deviation in Length & Width	±0.3% or ±1.0mm	± 0.1 %	±0.1%	ISO 10545-2 / IS 13630-1
2	Deviation in Thickness	±5% or ±0.5mm	± 5 %	±4%	
3	Straightness of Sides	±0.3% or ±0.8mm	± 0.1 %	±0.1%	
4	Rectangularity	±0.3% or ±1.5mm	± 0.1 %	±0.1%	
5	Surface Flatness	±0.4% or ±1.8mm	± 0.5 %	±0.3%	
6	Surface Quality	Min 95%	Min 95% free from visible defects	Min 95%	
B) Physical Properties					
1	Water Absorption	<0.5%, individual Max 0.6%.	Average <0.08, Individual 0.1%, Max	≤ 0.05%	ISO 10545-3 / IS 13630-2
2	Scratch Hardness of Surface (Moh's scale)	–	5, Min	>6	IS 13630 part 13
3	Flexural Strength (Average MOR)	≥35 N/mm ² , Individual 32N/mm ² , Min	Average 35N/mm ² , Individual 32N/mm ² , Min	>38N/mm ²	ISO 10545-4 / IS 13630-6
4	Breaking Strength	≥1300N	≥1300N	>3500N	
5	Impact Resistance	Report value	5, Min	≥0.55	ISO 10545-5 / IS 13630-14
6	Deep Abrasion Resistance (Ungalzed)	<175mm ³	<175mm ³	<120mm ³	ISO 10545- 6 / IS 13630-12
7	# Skid Resistance				
	a) Skid Resistance - Ramp Test	Manufacturer to declare	Manufacturer to declare	>R9	DIN 51130
	b) Coefficient of Friction	Manufacturer to declare	Manufacturer to declare	>0.42	ISO 10545 -17/ANSI A 326.3
8	Bulk Density, in (g/cc)	–	>2.0	>2.2	ASTM C373-16 / IS 13630-2
9	Moisture Expansion	Manufacturer to declare	Manufacturer to declare	≤0.3mm/m	IS 13630-part 3 / ISO 10545-10
10	Frost Resistance	–	Manufacturer to declare	No damage	ISO 10545-12 / IS 13630-10
11	Color Resistance to UV Light	Manufacturer to declare	–	No change in color	DIN 51094
C) Chemical Properties					
1	Resistance to Concentrated HNO ₃ & H ₂ SO ₄ Acid (wt. Loss)	–	< 1.5 %	<0.8%	IS 4457:2007 Annex G
2	Resistance to Chemicals				
	a) Resistance to Low concentrations of acids & alkalis	Manufacturer to declare	Manufacturer to declare	GLA	ISO 10545-13/IS 13630 -8
	b) Resistance to High concentrations of acids & alkalis	Manufacturer to declare	Manufacturer to declare	GHA	
	c) Resistance to household chemicals and swimming pool salts	Min B	Class AA min	B(ISO)/AA (IS)	
3	Stain Resistance	Min Class 3	Class 1 min	Min Class 3 (ISO), Class 1 (IS)	ISO 10545-14 / IS 13630-8
D) Thermal Properties					
1	Linear Thermal Expansion	–	≤6x10 ⁻⁴ K ⁻¹	≤6x10 ⁻⁴ K ⁻¹	ISO 10545-8 / IS 13630-4
2	Thermal Shock Resistance	No damage	10cycle , Min	No damage	ISO 10545-9 / IS 13630 -5

Ramp Test: Suitable for all kind of surfaces [Plain, structural..etc]

Slider (BOT -3000E Digital Tribometer): Suitable for plain / smooth surface and not working for structural / profiled surface

PACKING DETAILS

Product Stepping Stone Tile	Nominal Size (cm)	No. of Tiles / Box	Approx. Area / Box (sqm)	Approx. Weight / Box (Kg)	Approx. Cartons / 20' Container	Approx. Area / 20' Container (sqm)
30x120cm (1.2cm Thk)	30x120	4	1.44	40	675	972
60x120cm (1.2cm Thk)	60x120	2	1.44	40	675	972
30x95cm (1.2cm Thk)	30x95	4	1.14	31	870	992
60x95cm (1.2cm Thk)	60x95	2	1.14	31	870	992
31x152cm (1.2cm Thk)	31x152	4	1.88	52	519	978
62x152cm (1.2cm Thk)	62x152	2	1.88	52	519	978

Many discerning buyers have chosen Johnson Endura products, listed below are a few of them.

Banking:

Federal Banking Head Office, Aluva

South Indian Banking Corporate Office, Cochin

Developer:

Cheyar Sez Developers Private Limited, Tindivanam

Tvs Emerald Haven Realty Ltd, Chennai

Malabar Developres, Calicut

Sreedhanya Apartments, Trivandrum

Artech Realtors, Trivandrum

Nambiar Builders, Bangalore

Cheyar Sez Developers Private Limited, Cheyyar

Swastick Group, Kolkata

Surekha Group, Kolkata

Vinayak Group

Control S Projects, Chennai, Mumbai, Hyderabad

Brigade Constructions Ltd, Hyderabad

Pride Constructions, Hyderabad

Laxmi Swaroop Complex, Patna

Avinash Buildcon, Raipur

Godrej - Mahalunge, Pune

Godrej - Mamudi, Pune

Godrej - Nurture, Pune

Gera Builders, Pune

Pride Builders, Pune

Havmore, Talegaon

Nyati, Pune

Vilas Javdekar, Pune

Pate Developers, Pune

S K Fortune, Pune

Koti Bhaskar, Pune

Man Infraconstruction Limited, Ghatkopar Avenue, Mumbai

Godrej Highrises Properties Pvt Ltd, Mumbai

S D Corp, Kandivali, Mumbai

Horizon Ptojects P Limeted, My City, Dombivali, Mumbai

Prestige Jasdan Classic - Byculla, Mumbai

Prestige Liberty Tower - Mahalaxmi, Mumbai

Mahima Sansaar, Jaipur

Educational Institute:

Sacred Heart College, Kochi, Cochin

Global Public School, Thiruvaniyoor

lit, Kharagpur

Garden High School, Kolkata

Ave Maria School, Hyderabad

Xlri - Jamshedpur

lit , Indore

Kalka Public School, Faridabad

Food & Beverages:

Dominos, Noida

Government:

Life Insurance Corporation, Chennai

Life Insurance Corporation, Cochin

Pwd Office Govt Of Wb, Burdhaman

Healthcare:

Tata Cancer Hospital, Ranchi

Shahabad Hospital, Arrah

Aurbindo Hospital, Indore

Zydus Cadila Lifescience, Ankleshwar

Cheyar Sez, Cheyyar

Hospitality:

Parklane Hotels, Hyderabad

Taj, The Trees Project, Mumbai

Others:

Daikin Industries, Ltd., Tada

Ls Mills, Theni

Tarsons Products Ltd, Kolkata

Itc Limited , Bhadrachalam

Tcs Technologies, Hyderabad

Jk Paper Mills, Rayagada

Sri Umananda Temple, Guwahatti

Tata Group, Jamshedpur

Jrd Tata Sports Complex Football Stadium, Jamshedpur

GNFC Bharuch, Bharuch

Power:

NTPC Limited, Ramagundam

Refinery:

Bhatinda Refinery Housing Complex, Bathinda

Steel / Chemical / Cement:

Gnfc Bharuch, Bharuch

YOU CAN ALSO REACH US AT



Region	Branch	Tel.:
East	Kolkata	033-46021880
	Bhubaneswar	0674 6539836/37/2430240
	Siliguri	9836065812
	Guwahati	8135846661/7575900492
	Ranchi	9576038118
West	Mumbai	022-40647500
	Thane	022-25867600 / 666
	Pune	020-41301164 / 31
	Aurangabad	8669600748
	Ahmedabad	079-48480010
	Raipur	0771-4919129
	Indore	0731-4007441
	Jalandhar	0182-4505038 / 39
North	Chandigarh	0172-4697100
	Delhi	011-49526600

Region	Branch	Tel.:
North	Jaipur	0141-2368329
	Lucknow	0522-2721699
	Varanasi	0542-2222620
	Patna	9576038781
South	Bengalure	080-22234310/080-22234330
	Hyderabad	040-29802270 / 71 / 72
	Vijayawada	9666429666
	Vishakhapatnam	0891-2796376
	Tirupati	9121228960
	Kochi	0484-4871277
	Kozhikode	0422-4382698
	Thiruvananthapuram	0471-2720141
	Chennai	044-28544116 / 28541881
	Coimbatore	0422-4382698
	Madurai	0452-4355584 / 4355594
Trichy	9486718544	

EXPERIENCE CENTERS

Location	Address	Tel.:
Kolkatta	HOUSE OF JOHNSON - 83 JBS Haldane Avenue, TOPSIA Trinity towers Kolkata - 700046	033-46021880
Guwahati	HOUSE OF JOHNSON - 1st Floor, Above Royal Riders Honda, Near Rahul Kata, Pub Bragaon, Garchuk, Guwahati - 781035	7575900492
Bhubaneswar	HOUSE OF JOHNSON - Ray Tower, 1st Floor, N4/237, Indradhanu market, IRC Village, Nayapalli, Bhubaneswar, Orissa - 751015	0674 6539836/37/2430240
Patna	HOUSE OF JOHNSON - SK Builders and colonizer Pvt.Ltd.,1st Floor, SK Palace, Saguna more, Bihar - 801503.	9702651243
Chandigarh	HOUSE OF JOHNSON - SCO 214, sector14, Panchkula, Haryana - 134109	0172-4637724
Delhi	HOUSE OF JOHNSON - First & Mezzanine Floor, B-1/G-3, Mohan Industrial Estate, Mathura Road, New Delhi - 110094.	11-49526600
Lucknow	HOUSE OF JOHNSON - 1st Floor, Prithvi Ratan Height,Plot No CP-4, Vijayant khand - 3, Gomtinagar Yojna, Lucknow - 226028	0522-2721699
Varanasi	HOUSE OF JOHNSON - Ashakunj, 1st floor, D59/103 D4, Opp Siddharth Complex, Sgra Mehmoorganj Road, Varanasi - 221010	0542-2222620
Aurangabad	House Of Johnson Aurangabad - Gut No 16/44, NH-211, Near Balapur Phata, Near Ramkisan Lawns, Beed Bypass Road Aurangabad 431005	8669600748
Pune	HOUSE OF JOHNSON - Sable House, Poona Snuff Factory, Sr. No 11A, Plot 408/4/5, Satara Road, Gultekadi, Pune - 411037	7350009364
Thane	HOUSE OF JOHNSON - Shop No.5, Gr.Floor, Cosmos Jewels, Near Dmart, Anand Nagar, Ghodbunder Road, Thane West - 400615	8424003247
Mumbai - Andheri	HOUSE OF JOHNSON - 1st flr, Bonanza, Sahar Plaza, Nr Hotel Kohinoor continental, J B Nagar, Andheri Kurla Road, Andheri East, Mumbai - 400059	8108030975
Ahmedabad	HOUSE OF JOHNSON - F 106-107, Shivalik Plaza, IIM Road, Panjrapole Cross Road, Ahmedabad, Gujarat - 380015	079-48480010
Indore	HOUSE OF JOHNSON - Shop No 5, 6, 7 and 8, Upper Ground Floor, Exotica, Shalimar Township, Village Niranjanpur, A. B. Road, Indore, Madhya Pradesh - 452001	0731-4007441
Raipur	HOUSE OF JOHNSON - 2nd Floor, MM Silver Plaza, Opp Udyog Bhawan, Ring Road - 1, Raipur, Chattisgarh - 492001	771-4919129
Coimbatore	HOUSE OF JOHNSON - Elysium Towers, Park Gate Rd, No. 21, ATT Colony, Gopalapuram, Coimbatore - 641018	0422-4382698
Chennai	HOUSE OF JOHNSON - 82, 84 & 86 Bascon Maeru, 1st floor, Kodambakkam High Road, Nungambakkam, Chennai - 600034	044-48611632
Kochi	HOUSE OF JOHNSON - Door no. 11/300 f, Next to VTJ Hyundai, NH 47 Kundanoor, Maradu, Kochi, Ernakulam - 682304	0484-4871277
Kozhikode	HOUSE OF JOHNSON - Tilal Tower, Near Nexa Showroom, Kudilthod, Malaparamba bypass, Kozikode, Kerala - 673017	0495-2357505
Thiruvananthapuram	HOUSE OF JOHNSON -1st Floor, Sreedhanya Apex, TC 22/3720 (4) Vellayambalam, Sasthamangalam PO, Thiruvananthapuram, Kerala - 695010	0471-2720141
Bengalure	HOUSE OF JOHNSON - No.39, Rajaram Mohan Roy Road , Opp. Kanteerava indoor Stadium, Bengalure - 560027	080-22234310/080-22234330
Bengalure	HOUSE OF JOHNSON - Dodda Banaswadi, Opp. New Baldwin Residential School, Bengalure-560043	080-41692976 / 41692060
Hyderabad	HOUSE OF JOHNSON - SP Jubilee Crown (3rd Floor) Plot - 1270, Road No.36, Jubilee Hills, Hyderabad - 500033	8897525143

For address and contact numbers of our Johnson Exclusive Showrooms and Authorized Retailers, please visit our website www.hrjindia.com

www.enduratile.com

Toll Free No.: 1800-210-7484 WhatsApp No.: +91 84510 57484

Email: tiles.customercare@prismjohnson.in

For Export Enquires, Email: exports.customercare@prismjohnson.in



PRISM JOHNSON LIMITED

H & R JOHNSON (INDIA) DIVISION

Corporate Office: "Rahejas", Main Avenue, 3rd Floor, V. P. Road,
Santacruz (W), Mumbai - 400 054

Website: www.hrjohnsonindia.com

Registered Office: 305, Laxmi Niwas Apartments, Ameerpet,
Hyderabad - 500016, Telangana, India.

 [HRJIndia](#)  [@hrjohnsonofficial](#)  [Hrjohnsonindia](#)  [hrjohnson_india](#)

 [h-&-r-johnson-india-prism-johnson-limited](#)  [HRJohnsonIndia1](#)