

# MaxGrip

Anti Slip Tiles

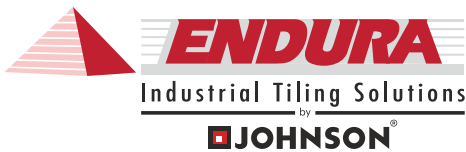
## Maximum Grip Minimum Risk

Endura Maxgrip –  
The Best in Class Anti Slip Tiles.

R10

R11

R12





IT'S

**GRIPPING**

**R** 10  
11  
12

60 X 60 &  
30 X 30 CM

At Prism Johnson we believe in redefining lifestyles. And as always we stand true to this belief, rather FIRMLY. With the all new Endura MaxGrip range of anti-skid tiles that help you keep your feet firm on the ground, while you admire its beauty. High traffic areas are full of surprises, some pleasant, some not so much. Wet floors other than being sore to the eyes can be dangerous, too. At times like these you need to put your foot down and ask for flooring that gives you grip that keeps you safe from any kind of harm.

The Endura MaxGrip is one such range of floor tiles and is ideal for interior and exterior application areas like malls, Parking Lots, Hospitals, Educational Institutes, ramps, pools, gymnasiums and many more. Moreover, they are easy to clean and maintain, making them safe, hygienic, durable and even versatile. Go ahead, walk, run, hop, skip, and jump; for here are a set of floor tiles that ensure maximum safety with least slip-ups.

Injuries due to slips and falls are common with elderly. Especially in wet areas like bathroom. In fact, it is the common cause of TBI (Traumatic Brain Injury).

Endura has addressed the problem in the form of Maxgrip anti slip tiles, with coefficient of friction prevent skidding.

## Science Friction:

### What is R value?

When it comes to floor tiles in high traffic areas, a little bit of friction helps you go a long way - quite literally. Science defines Friction as "the force that acts between two bodies so as to resist their sliding over one another." Simply put, a floor with more friction will provide enough grip in most circumstances to prevent a person from falling. And in tiles it is measured in a unit called R value which ranges from R 9 to R 12, with R 13 being the best anti skid property.



# SLIP PREVENTION 'R' RATINGS FOR FLOORING SURFACES

R9

R10

R11

R12

R13

## Putting the science to test:

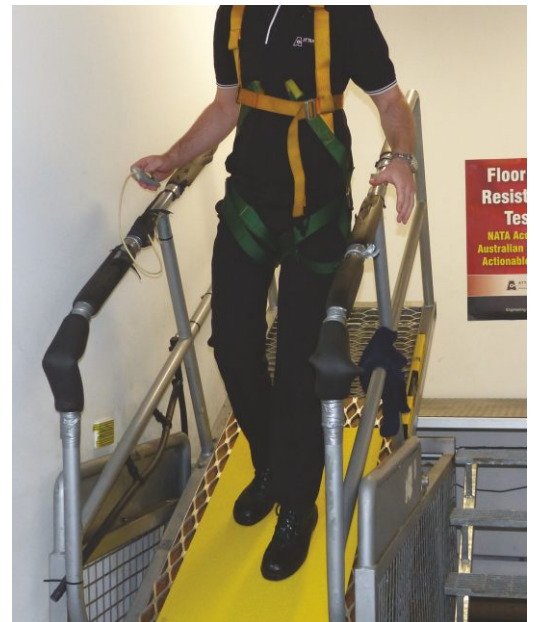
The test performed to determine the value are BOT Digital Tribometer test, Pendulum test & RAMP test.  
The most popular is the RAMP Test.

### RAMP Test

#### A) Oil wet ramp slip resistance test:

DIN 51130- The slip resistance of tile is tested on an inclined surface with a predetermined slope angle and classified according to rating rules R9 to R13.

This test requires an operator who is protected by a fall restraint harness. The operator, wearing standard footwear, walks back wards and forwards over a sample of a flooring material that has been evenly coated with oil. Beginning with the ramp in a horizontal position he gradually increases the angle of inclination until the limit of safe walking is reached and the test person slips. The acceptance angle obtained is used to express the degree of slip resistance.



### Assessment Groups:

	Lower limit value	Upper limit value
R9	6°	10°
R10	>10°	19°
R11	>19°	27°
R12	>27°	35°
R13	>35°	

R9



6°-10°

R10



10°-19°

R11



19°-27°

R12



27°-35°

R13






>35°

## B) Wet barefoot slip resistance test- (DIN 51097 ABC rating)

The ramp test is carried out barefoot with the use of soapy water as a contaminant (DIN 51097). The angle at which slipping occurs is used to establish an A, B or C rating for the barefoot test

### Classification Groups and Areas of Application:

Classification Groups	Lower limit value	Upper limit value		
<b>A</b>		12°	18°	<ul style="list-style-type: none"> <li>• Barefoot hallways (mainly dry)</li> <li>• Individual and group changing rooms with lockers</li> <li>• Pool floors in non-swimmer areas, where the water level exceeds 80 cm</li> <li>• Sauna and relaxation areas (mainly dry)</li> </ul>
<b>B</b>		>18°	24°	<ul style="list-style-type: none"> <li>• Barefoot hallways, if not classified in A</li> <li>• Showers</li> <li>• Area surrounding the disinfectant sprayers</li> <li>• Pool surrounds</li> <li>• Pool floors in non-swimmer areas in the tide effect pool</li> <li>• Lift slab floors</li> <li>• Paddling pools</li> <li>• Steps and ladders outside the pool area</li> <li>• Sauna and relaxation area, provided they are not assigned to A</li> </ul>
<b>C</b>		>24°		<ul style="list-style-type: none"> <li>• Steps and ladders leading into the water</li> <li>• Stairways leading to diving boards and water slides</li> <li>• Foot basins</li> <li>• Inclined pool borders</li> </ul>



### BOT-3000E Digital Tribometer

The tribometer can accurately measure both static coefficient of friction (SCOF) and dynamic coefficient of friction (DCOF), wet or dry



### Pendulum Test

Pendulum slip resistance test (Dry & Wet) – Pendulum Test value (PTV) MunroStanley – Skid resistance Tester, is based on the Izod principle. In operation, a pendulum of a known mass rotates about a vertical spindle.



AZORTE BEIGE & DECOR



ALTONA GRIS PLUS



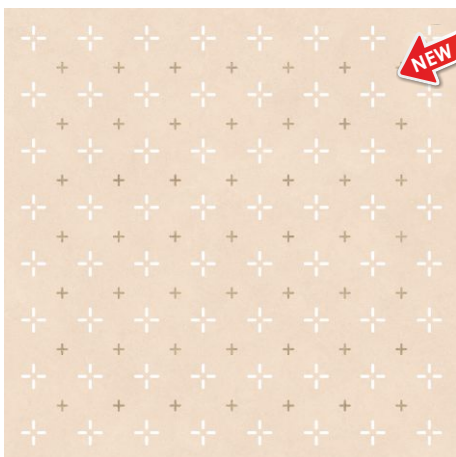
ASH GREY PLUS



ALLURE BRUNO PLUS



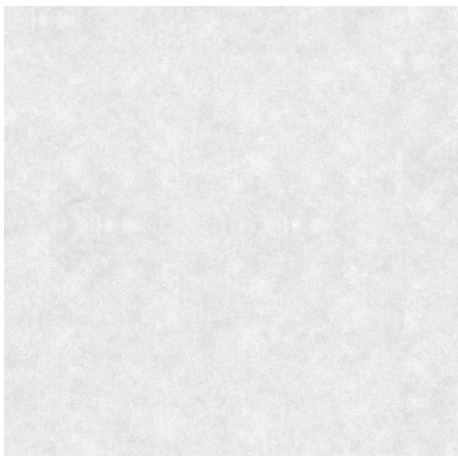
AZORTE BEIGE PLUS



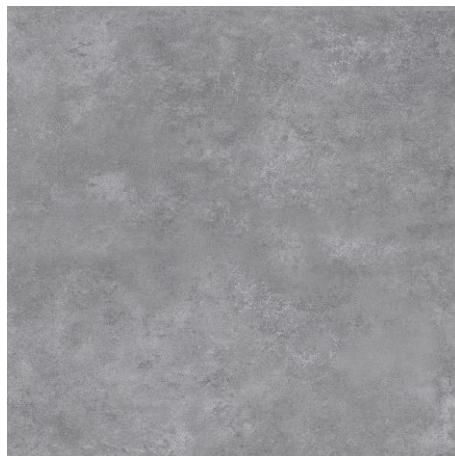
AZORTE BEIGE DECOR PLUS



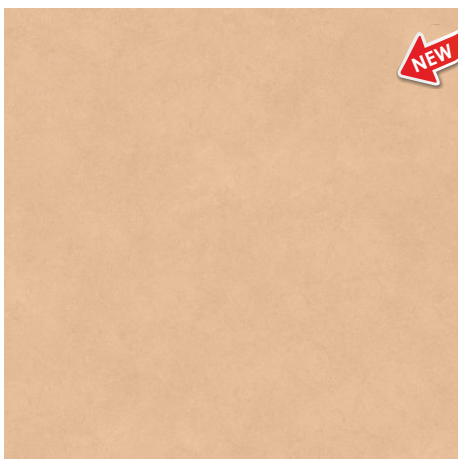
CABERIO COTTO PLUS



CLOUD GREY PLUS



CLOUD NERO PLUS



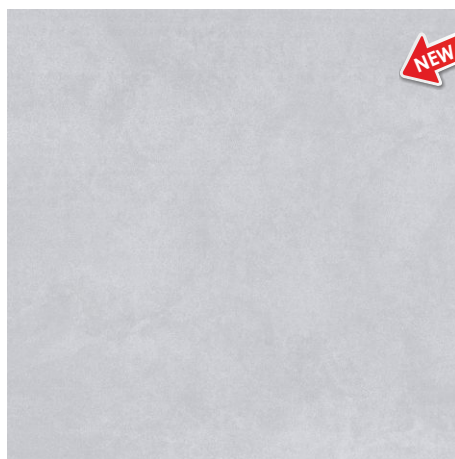
CREAZ COTTO PLUS



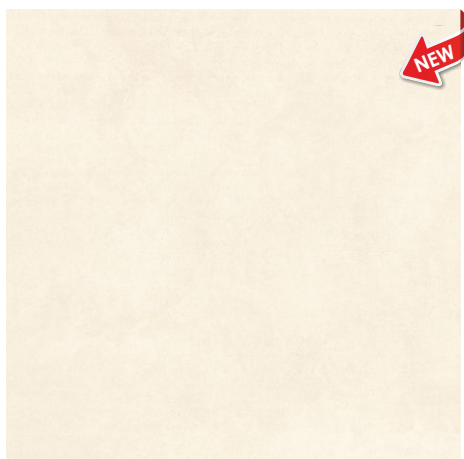
CREAZ COTTO DECO PLUS



CREST BROWN PLUS



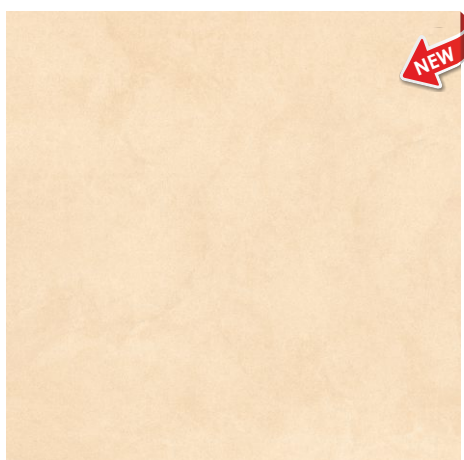
EZEE ASH PLUS\*



EZEE BIANCO PLUS\*



EZEE BRUNO PLUS\*



EZEE DUNE PLUS\*



EZEE GRIS PLUS\*



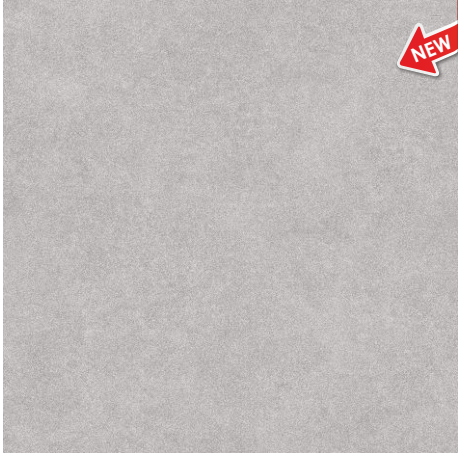
GLANCE TRAZO BEIGE PLUS



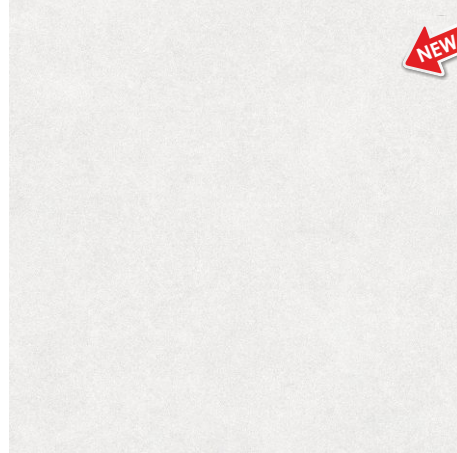
GLANCE TRAZO WHITE PLUS



TRENTO SKY



MODERNZ GRISPLUS



MODERNZ SMOKE PLUS



VIVID COOL GREY PLUS



VIVID SPRING PLUS



TRENTO SKY PLUS



MAX ASH



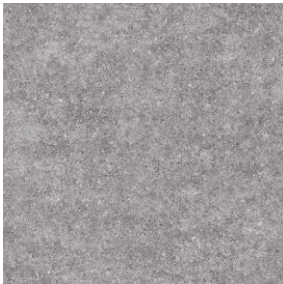
MAX ASH



MAX BRICK



MAX COTTO



MAX GRIS



MAX STEEL



MAX VERDE





**S&P DOTS GREY & BENALIUM**

# R 11 PARKING TILES

60X60 cm | 1.5 cm THICK

# MaxGrip

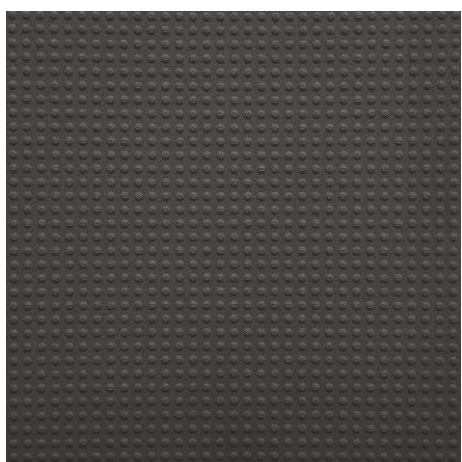
Anti Slip Tiles



BLUSH BRUNO



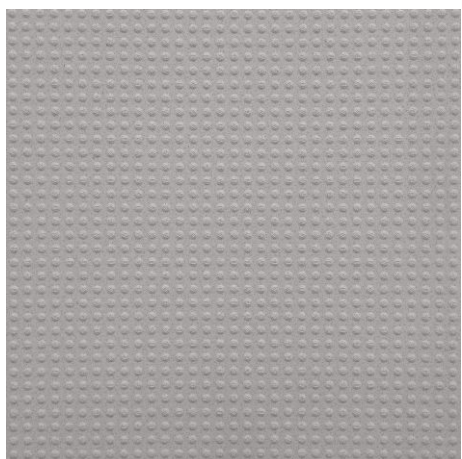
DOTS BEIGE



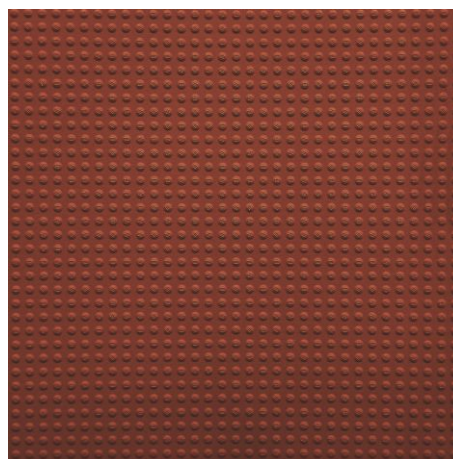
DOTS BENALIUM



DOTS GREY



DOTS S&P GREY



DOTS TERRACOTTA

# R 11 PARKING TILES

60X60 cm | 1.5 cm THICK



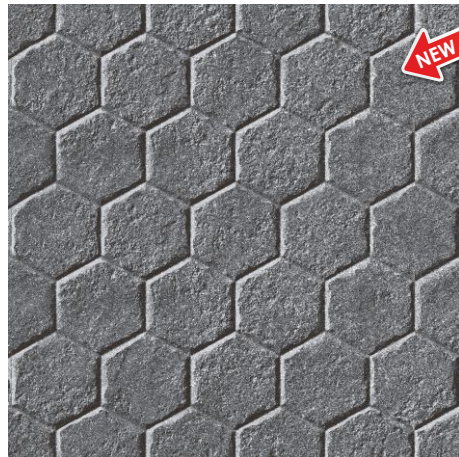
ROCK BEIGE\*



ROCK GREY



ROCK HEXA GREY



ROCK HEXA NERO



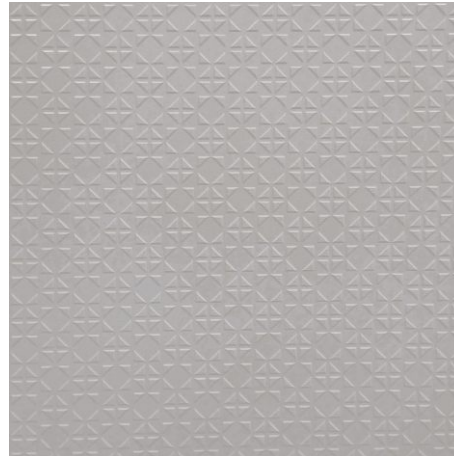
ROCK NERO



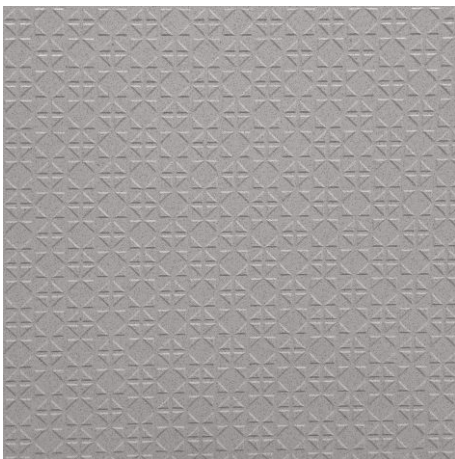
TRIANGLE BEIGE



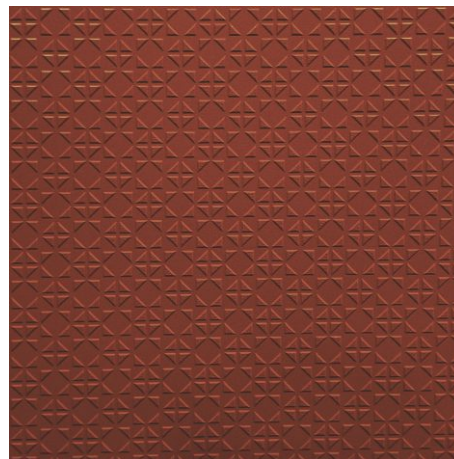
TRIANGLE BENALIUM



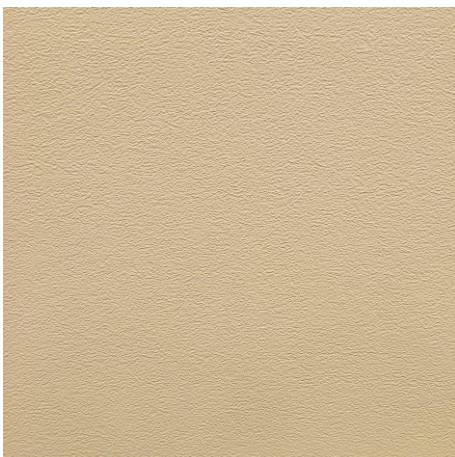
TRIANGLE GREY



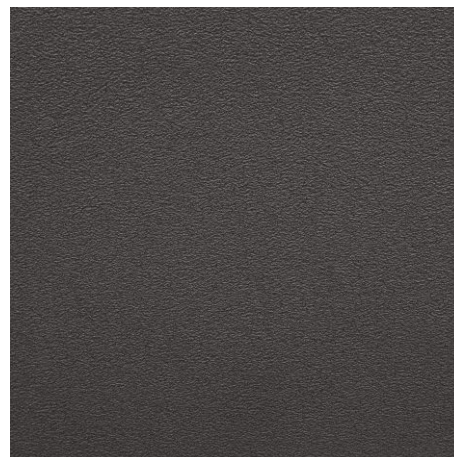
TRIANGLE S&P GREY



TRIANGLE TERRACOTTA



VOLCANO BEIGE



VOLCANO BENALIUM



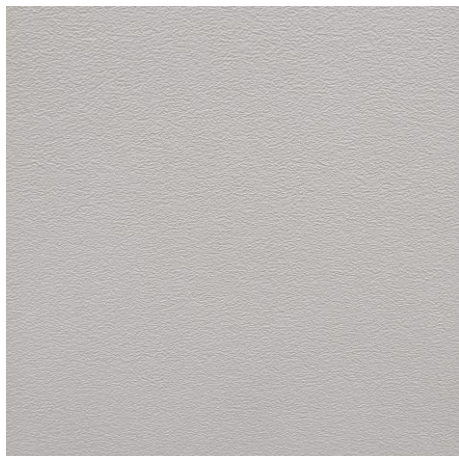
**VOLCANO TERACOTO**

# R 11 PARKING TILES

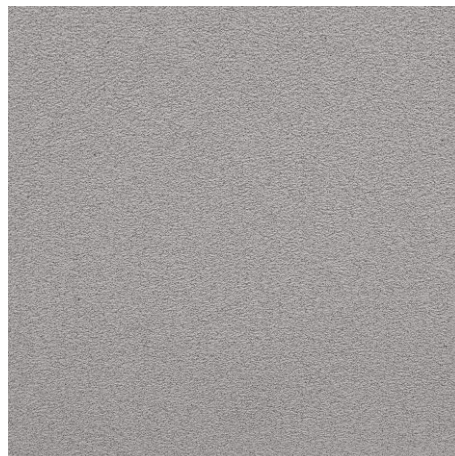
60X60 cm | 1.5 cm THICK

# MaxGrip

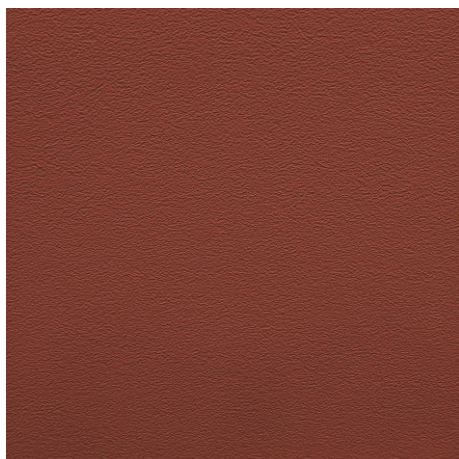
Anti Slip Tiles



VOLCANO GREY



VOLCANO S&P GREY



VOLCANO TERRACOTTA



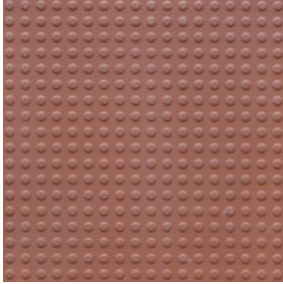
**MAXCIR IVORY**

**R11**

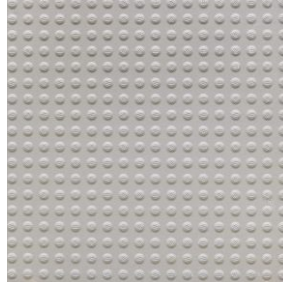
A/B/C CLASS | 30X30 cm | 1 cm THICK

**MaxGrip**

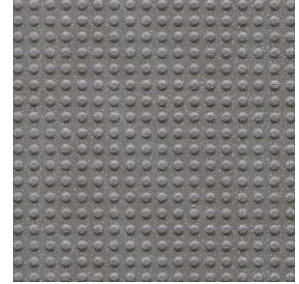
Anti Slip Tiles



MAXCIR COTTO



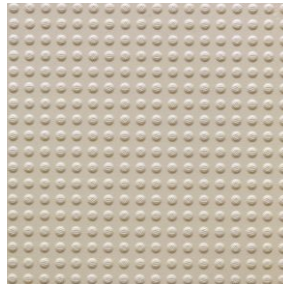
MAXCIR GREY



MAXCIR SNP NOIR



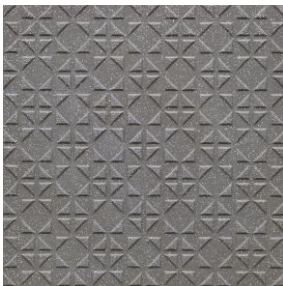
MAXCIR SNP WHITE



MAXCIR IVORY



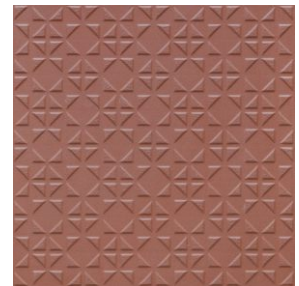
MAXTRI IVORY



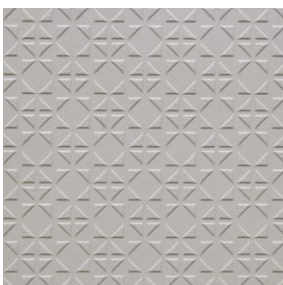
MAXTRI SNP NOIR



MAXTRI SNP WHITE



MAXTRI COTTO



MAXTRI GREY



MAX UMBER



MAX GRIS



MAX ASH



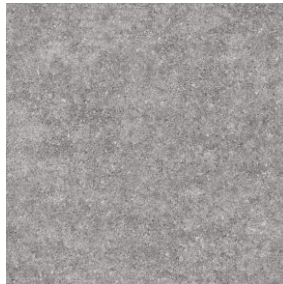
MAX BEIGE



MAX BRUNO



MAX COTTO



MAX GRIS



MAX STEEL



MAX UMBER

# APPLICATION AREAS

Application Area	R Scale	Application Area	R Scale
<b>General Work Room and Areas</b>		<b>Fire Brigade Buildings</b>	
Entrance Lobby, indoors	R9 / R10	Vehicle parking places	R12
Entrance areas, outdoors	R10 / R11	Rooms for hose maintenance equipment	R12
Sanitary (e.g. toilets, wash rooms)	R10	<b>Financial Institutions</b>	
Recreation Room/ Medical treatment rooms	R9 / R10	Counter areas	R9 /R10
<b>Catering Establishments</b>		Banks reception area	R9 /R10
Restaurant and hotel kitchens:		<b>Schools and Kindergartens</b>	
a) up to 100 meals per day	R11	Entrance areas, corridors, assembly halls	R9 /R10
b) more than 100 meals per day	R12	Classrooms, group rooms	R9
Commercial Kitchens for homes, schools, Kindergarten	R11	Toilets, washrooms	R10
Large scale commercial Kitchens for hospitals, University canteens, contract catering,		Instructional kitchens in schools	R10
food preparation (fast food kitchens snack bars)	R12	Special rooms for handicrafts	R10
Dish Washing rooms (wet)	R12	<b>Outdoor Areas</b>	
Dining rooms, guest rooms, canteens including serving counters	R9 /R10	Entrance areas	R10/R11
<b>Sales Outlets, Shops &amp; Hypermarkets</b>		Traffic routes	R10/R11
Reception of goods, meat /fish/ Slaughters room	R11	Loading platforms, covered	R10/ R11
Serving counters for meat Unpacked	R11	Loading platforms, not covered	R12
Serving counters for meat packed	R10	Sloping ramps	
Serving counters for fish / Meat /Flower	R10/ R11	(e.g. for wheel-chairs, loading platforms)	R12
Preparation area Food for selfservice sales	R10	Open air Parking areas	R10/R11
Cash register areas, packing areas	R9	<b>Automobile Workshops</b>	
Bakeries, cake shops,	R10	Repair and servicing bays	R10/R11
Ware houses for oils Fats,..etc	R11/ R12	Working and inspection pits	R12
Hairdressers	R 9 /R10	Car wash & Washing areas	R11
Spa	R11	<b>Laundry</b>	
Serving counters for bread,	R10	Rooms with washing machine dripping wet	R11
<b>Health Service Rooms</b>		Ironing rooms	R9
Medical treatment rooms	R9 /R10	<b>Aircraft Repair Workshops</b>	
Disinfection rooms (wet)	R11	Aircraft hangars	R11
Pathological facilities	R10	Repair hangars	R12
Rooms for medical baths, hydrotherapy	R11	Washing halls	R11
Washrooms of operating theatres	R10	<b>Sewage Treatment Plants</b>	
Sanitary rooms, ward bathrooms	R10	Pump rooms	R12
Rooms for medical diagnosis, and therapy	R9/R10	Rooms for sludge draining facilities	R12
Operating theaters	R9 /R10	Rooms for screening equipment	R12
Wards with hospital rooms and corridors	R9 /R10		
Medical practices, day clinics	R9 /R10		
Laboratories, Pharmacies	R9 /R10		

The above list of areas of application for commercial /industrial utilization contained in this brochure shows an extract from the standards BGR 181- DIN 51130 "Floors in work rooms and work areas with high risk of slipping"

### Q 1) Why need Antislip flooring?

Every year over 8 million people worldwide suffer from injuries due to slips and falls. Especially in elderlies, slip related fall has been the common cause for TBI (Traumatic Brain Injury) It is therefore important to look for ways to prevent slips and falls by keeping the hallways and walk through areas safe at all times. Endura MaxGrip provides an ideal solution to this problem by offering anti slip flooring in 3 grades - R 10, R 11 and R 12, enable you to choose according to the demands of the application area.

### Q 2) What is the specialty in Endura MAXGRIP compared to other ordinary slip resistance tile?

Endura MaxGrip tiles are manufactured in consonance with the International Slip Resistance Standard indicated by R value, R 10, R 11 and R 12. The tiles are subjected to stringent tests such as Tribometer, Pendulum and RAMP test. Thus Endura MaxGrip tiles feature unmatched slip resistance compared to the other so called slip resistant tiles.

### Q 3) What are the factors associated with Slips ?

#### **Controllable factors:**

- Environment - adequate lighting, slopes / gradients, external areas etc
- Floor material.
- Contaminants like water, oil, dust etc. which reduces the contact & traction between the feet & floor surface.

#### **Predictable factors:**

- Use of the surface
- Footwear
- Behavior: Awareness creation for safe working habits. Human vision, balance & reaction time also plays vital role in slip prevention

### Q 4) Why routine cleaning is essential for the performance of slip resistance tile?

In the heavy traffic areas the flooring tends to loosen its grip over the period of time due to constant friction, making it slippery. Furthermore, if proper cleaning regime is not followed, then the tiles fail to perform faster. Therefore it is of utmost importance to follow daily cleaning regime to maintain the performance of slip resistant tiles.

### Q 5) How can accidents caused by slipping be prevented?

Prevention of accidents, caused by slipping, is down to correct choice of flooring medium and good management (i.e. contamination prevention, cleaning regimes, type of footwear worn and an assessment of the surrounding environment). In order for management systems to be effective it is important that floor materials are suitable for the application and environment in which they are used, and an appropriate measuring method employed.

# TECHNICAL SPECIFICATIONS - R10 - 0.9 CM

S. No.	Test Description	IS - 4457:2007	IS - 15622:2017 Group B1b	Endura Maxgrip R10, Thickness-0.9 CM	Test Method
<b>A) Dimension Quality</b>					
1	Deviation in Length & Width	±0.6%	±0.1%	±0.1%	IS 4457:2007 Annex B / IS 13630-1
2	Deviation in Thickness	±5%	±5%	±4%	
3	Straightness of Sides	±0.2%	±0.1%	±0.1%	
4	Rectangularity	±0.2%	±0.1%	±0.1%	
5	Surface Flatness	±0.3%	±0.5%	±0.3%	
6	Surface Quality	Min 95%	Min 95%	Min 95%	
<b>B) Physical Properties</b>					
1	Water Absorption	<0.5%	0.08<E3	<0.5%	IS 4457:2007 Annex C / IS 13630-2
2	a) Scratch hardness of surface (Moh's scale) - Unglazed tile		≥5	≥7	IS 13630 part 13
	b) Scratch hardness of surface (Moh's scale) - Glazed tile		≥5	≥6	
3	Flexural Strength (Average MOR)	>35N/mm <sup>2</sup>	>30N/mm <sup>2</sup>	>38N/mm <sup>2</sup>	IS 4457:2007 Annex D / IS 13630-6
4	Breaking Strength	≥1300N	≥1100N	≥1800 N	IS 4457:2007 Annex D / IS 13630-6
5	Impact Resistance		≥0.55	≥0.55	IS 13630 -14
6	Deep Abrasion resistance (Unglazed tile)	<175mm <sup>3</sup>	<175mm <sup>3</sup>	<120 mm <sup>3</sup>	IS 4457:2007 Annex E / IS 13630-12
7	Resistance to Surface Abrasion of Glazed Tiles for Floor Application		Class II, Min	Min PEI IV - V	IS 13630 - 11
<b># Anti-Slip Properties</b>					
8	a) Ramp Test @ Value)			R10	DIN 51130
	b) Barefeet on Wet Area (A/B/C) Scale			A	DIN 51097
9	Frost Resistance		Manufacture to declare	No damage	IS 13630-10
10	Density (gm/cc)		≥2	≥2.2	IS 13630 part 2
11	Moisture Expansion	Manufacturer to declare		≤0.3 mm/m	IS 13630-part 3
12	Color Resistance to UV Light			No change in color	DIN 51094
<b>C) Chemical Properties</b>					
1	Resistance to Chemicals				ISO 10545-13
	a) Resistance to Low Concentrations of Acids & Alkalies	Manufacturer to declare	Manufacturer to declare	ULB /GLB	
	b) Resistance to High Concentrations of Acids & Alkalies	Manufacturer to declare	Manufacturer to declare	UHB/GHB	
	c) Resistance to Household Chemicals and Swimming Pool Salts	Manufacturer to declare	UB/GB	UB /GB	
2	Stain Resistance		Resistant	Resistant	ISO 10545-14
<b>D) Thermal Properties</b>					
1	Linear Thermal Expansion		≤7 x10 <sup>-6</sup> K <sup>-1</sup>	≤7 x10 <sup>-6</sup> K <sup>-1</sup>	IS 13630 part 4 / ISO 10545-8
2	Thermal Shock Resistance		10 cycle, Min	No damage	IS 13630 part 5 / ISO 10545-9

# Ramp Test: Suitable for all kind of surfaces (Plain, structural, etc.)

# Slider (BOT-3000E Digital Tribometer): Suitable for plain / smooth surface and not working for structural / profiled surface

## PACKING DETAILS

Product	Nominal Size (cm)	No. of Tiles/ Box	Approx. Area/ Box (sq.m)	Approx. Weight/ Box (kgs)	Approx Cartons / 20' Container	Approx Area/ 20' Container (sq m)
30x30cm - 10mm R10	30x30-R10	18	1.44	18.6	1455	2095
60x60cm - R10	60x60-R10	4	1.44	28.7	940	1354
60x60cm - 15mm R11	60x60-R11	4	1.44	32	843	1214

**Disclaimer:** Endura MaxGrip tiles have been tested for the latest International R value standard tests for anti slip performance. However as other environmental factors and improper maintenance may affect the performance over the period of time.

# TECHNICAL SPECIFICATIONS - R11 - 1.5 CM

S. No.	Test Description	IS - 4457:2007	IS - 15622:2017 Group B1b	Endura Maxgrip R11, Thickness-1.5 CM	Test Method
<b>A) Dimension Quality</b>					
1	Deviation in Length & Width	±0.6%	±0.1%	±0.1%	IS 4457:2007 Annex B / IS 13630-1
2	Deviation in Thickness	±5%	±5%	±4%	
3	Straightness of Sides	±0.2%	±0.1%	±0.1%	
4	Rectangularity	±0.2%	±0.1%	±0.1%	
5	Surface Flatness	±0.3%	±0.5%	±0.3%	
6	Surface Quality	Min 95%	Min 95%	Min 95%	
<b>B) Physical Properties</b>					
1	Water Absorption	<0.5%	0.08(E3)	<0.5%	IS 4457:2007 Annex C / IS 13630-2
2	a) Scratch hardness of surface (Moh's scale) - Unglazed tile		≥5	≥7	IS 13630 part 13
	b) Scratch hardness of surface (Moh's scale) - Glazed tile		≥5	≥6	
3	Flexural Strength (Average MOR)	>35N/mm <sup>2</sup>	>30N/mm <sup>2</sup>	>35N/mm <sup>2</sup>	IS 4457:2007 Annex D / IS 13630-6
4	Breaking Strength	>1300N	>1100N	>5500 N	IS 4457:2007 Annex D / IS 13630-6
5	Impact Resistance		≥0.55	≥0.55	IS 13630 -14
6	Deep Abrasion resistance (Unglazed tile)	<175mm <sup>3</sup>	<175mm <sup>3</sup>	<120 mm <sup>3</sup>	IS 4457:2007 Annex E / IS 13630-12
7	Resistance to Surface Abrasion of Glazed Tiles for Floor Application		Class II, Min	Min PEI IV - V	IS 13630 - 11
<b># Anti-Slip Properties</b>					
8	a) Ramp Test @ Value)			R11	DIN 51130
	b) Barefeet on Wet Area (A/B/C) Scale			B	DIN 51097
9	Frost Resistance		Manufacture to declare	No damage	IS 13630-10
10	Density (gm/cc)		≥2	>2.2	IS 13630 part 2
11	Moisture Expansion	Manufacturer to declare		≤0.3 mm/m	IS 13630-part 3
12	Color Resistance to UV Light			No change in color	DIN 51094
<b>C) Chemical Properties</b>					
1	Resistance to Chemicals				ISO 10545-13
	a) Resistance to Low Concentrations of Acids & Alkalies	Manufacturer to declare	Manufacturer to declare	ULB /GLB	
	b) Resistance to High Concentrations of Acids & Alkalies	Manufacturer to declare	Manufacturer to declare	UHB/GHB	
	c) Resistance to Household Chemicals and Swimming Pool Salts	Manufacturer to declare	UB/GB	UB /GB	
2	Stain Resistance		Resistant	Resistant	ISO 10545-14
<b>D) Thermal Properties</b>					
1	Linear Thermal Expansion		≤7 x10 <sup>-6</sup> K <sup>-1</sup>	≤7 x10 <sup>-6</sup> K <sup>-1</sup>	IS 13630 part 4 / ISO 10545-8
2	Thermal Shock Resistance		10 cycle, Min	No damage	IS 13630 part 5 / ISO 10545-9

# Ramp Test: Suitable for all kind of surfaces (Plain, structural, etc.)

Many discerning buyers have chosen Johnson Endura products, listed below are a few of them.

## **Aerospace/aviation:**

Rewa Airport, Rewa

## **Developer:**

Sree Dhanya Homes, Trivandrum

Mather Orchards (Great & Serene), Cochin

Mansion Properties, Trivandrum

Urban Scape Properties, Trivandrum

Indroyal Properties Private Limited, Trivandrum

SFS Homes, Trivandrum

Asset Homes, Kottayam

Ambuja Neotia Group, Kolkata

Brindavan Residency, Hyderabad

SRR Projects Pvt. Ltd., Vishakhapatnam

Sapphire Greens, Raipur

Navkiran Society, Khar

## **Educational Institute:**

SRM Institute of Science & Technology, Kattan, Kulathur

University of Kalyani, Kalyani

Shishukunj International School, Indore

Riverton High School, Bhopal

Holy Family School, Indore

lit, Indore

Govind Gopal International School, Mhow

## **Food & Beverages:**

Jai Shree Gayatri Foods, Sehore

## **Government:**

Mes Project, Jaisalmer

Manak Bhawan, Delhi

## **Healthcare:**

Shree Sai Multispeciality Hospital, Gingee

Liberty Hospitals Private Limited, Hyderabad

Navadweep Hospital, Nalbari

Sohana Hospital, Mohali

## **Hospitality:**

Sisters Of The Destitute(old Age Home), Aluva

La Sonajhuri Resort, Bolpur

Sri Krishna Hospital, Hyderabad

Shivam Amusement, Hyderabad

Imagica Water Park, Khopoli

Wet & Joy Water Park, Shirdi

Nerul Gymkhana, Nerul

## **Power:**

NTPC, Gadawada

## **Public Transport:**

NCRTC Metro, Ghaziabad

## **Steel/ Chemical/ Cement:**

Dalmia Cement, Dalmiapuram

Durgapur Steel Plant Hospital, Durgapur

## **Others:**

Indulekha Hair Oil Factory, Kannur

Isha Foundation, Coimbatore

Smart City Project, Rourkela

Birsa Munda Athletic Stadium, Rourkela

Madhya Pradesh Cricket Association (MPCA), Gwalior

Chogan Stadium, Jaipur

Malabar Gold And Diamonds, Rajauri Garden

## YOU CAN ALSO REACH US AT

Region	Branch	Tel.:
East	Kolkata	033-46021880
	Bhubaneshwar	0674 6539836/37/2430240
	Siliguri	9836065812
	Guwahati	8135846661/7575900492
	Ranchi	9576038118
West	Mumbai	022-40647500
	Thane	022-25867600 / 666
	Pune	020-41301164 / 31
	Aurangabad	8669600748
	Ahmedabad	079-48480010
	Raipur	0771-4919129
	Indore	0731-4007441
North	Jalandhar	0182-4505038 / 39
	Chandigarh	0172-4697100
	Delhi	011-49526600

Region	Branch	Tel.:
North	Jaipur	0141-2368329
	Lucknow	0522-2721699
	Varanasi	0542-2222620
	Patna	9576038781
South	Bengalure	080-22234310/080-22234330
	Hyderabad	040-29802270 / 71 / 72
	Vijayawada	9666429666
	Vishakhapatnam	0891-2796376
	Tirupati	9121228960
	Kochi	0484-4871277
	Kozhikode	0422-4382698
	Thiruvananthapuram	0471-2720141
	Chennai	044-28544116 / 28541881
	Coimbatore	0422-4382698
	Madurai	0452-4355584 / 4355594
	Trichy	9486718544

## JOHNSON EXPERIENCE CENTERS

Location	Address	Tel.:
Kolkata	HOUSE OF JOHNSON - 83 JBS Haldane Avenue, TOPSIA Trinity towers Kolkata - 700046	033-46021880
Guwahati	HOUSE OF JOHNSON - 1st Floor, Above Royal Riders Honda, Near Rahul Kata, Pub Bragaon, Garchuk, Guwahati - 781035	7575900492
Bhubaneshwar	HOUSE OF JOHNSON - Ray Tower, 1st Floor, N4/237, Indradhanu market, IRC Village, Nayapalli, Bhubaneshwar, Orissa - 751015	0674 6539836/37/2430240
Patna	HOUSE OF JOHNSON - SK Builders and colonizer Pvt.Ltd.,1st Floor, SK Palace, Saguna more, Bihar - 801503.	9702651243
Chandigarh	HOUSE OF JOHNSON - SCO 214, sector14, Panchkula, Haryana - 134109	0172-4637724
Delhi	HOUSE OF JOHNSON - First & Mezzanine Floor, B-1/G-3, Mohan Industrial Estate, Mathura Road, New Delhi - 110094.	11-49526600
Lucknow	HOUSE OF JOHNSON - 1st Floor, Prithvi Ratan Height,Plot No CP-4, Vijayant khand - 3, Gomtinagar Yojna, Lucknow - 226028	0522-2721699
Varanasi	HOUSE OF JOHNSON - Ashakunj, 1st floor, D59/103 D4, Opp Siddharth Complex, Siga Mehmoorganj Road, Varanasi - 221010	0542-2222620
Aurangabad	House Of Johnson Aurangabad - Gut No 16/44, NH-211, Near Balapur Phata, Near Ramkisan Lawns, Beed Bypass Road Aurangabad 431005	8669600748
Pune	HOUSE OF JOHNSON - Sable House, Poona Snuff Factory, Sr. No 11A, Plot 408/4/5, Satara Road, Gultekadi, Pune - 411037	7350009364
Thane	HOUSE OF JOHNSON - Shop No.5, Gr.Floor, Cosmos Jewels, Near Dmart, Anand Nagar, Ghodbunder Road, Thane West - 400615	8424003247
Mumbai - Andheri	HOUSE OF JOHNSON - 1st flr, Bonanza, Sahar Plaza, Nr Hotel Kohinoor continental, J B Nagar, Andheri Kurla Road, Andheri East, Mumbai - 400059	8108030975
Ahmedabad	HOUSE OF JOHNSON - F 106-107, Shivalik Plaza, IIM Road, Panjrapole Cross Road, Ahmedabad, Gujarat - 380015	079-48480010
Indore	HOUSE OF JOHNSON - Shop No 5, 6, 7 and 8, Upper Ground Floor, Exotica, Shalimar Township, Village Niranjapur, A. B. Road, Indore, Madhya Pradesh - 452001	0731-4007441
Raipur	HOUSE OF JOHNSON - 2nd Floor, MM Silver Plaza, Opp Udyog Bhawan, Ring Road - 1, Raipur, Chattisgarh - 492001	771-4919129
Coimbatore	HOUSE OF JOHNSON - Elysium Towers, Park Gate Rd, No. 21, ATT Colony, Gopalapuram, Coimbatore - 641018	0422-4382698
Chennai	HOUSE OF JOHNSON - 82, 84 & 86 Bascon Maeru, 1st floor, Kodambakkam High Road, Nungambakkam, Chennai - 600034	044-48611632
Kochi	HOUSE OF JOHNSON - Door no. 11/300 f, Next to VTJ Hyundai, NH 47 Kundanoor, Maradu, Kochi, Ernakulam - 682304	0484-4871277
Kozhikode	HOUSE OF JOHNSON - Tilal Tower, Near Nexa Showroom, Kudilthod, Malaparamba bypass, Kozikode, Kerala - 673017	0495-2357505
Thiruvananthapuram	HOUSE OF JOHNSON -1st Floor, Sreedhanya Apex, TC 22/3720 (4) Vellayambalam, Sasthamangalam PO, Thiruvananthapuram, Kerala - 695010	0471-2720141
Bengalure	HOUSE OF JOHNSON - No.39, Rajaram Mohan Roy Road , Opp. Kanteerava indoor Stadium, Bengalure - 560027	080-22234310/080-22234330
Bengalure	HOUSE OF JOHNSON - Dodda Banaswadi, Opp. New Baldwin Residential School, Bengalure-560043	080-41692976 / 41692060
Hyderabad	HOUSE OF JOHNSON - SP Jubilee Crown (3rd Floor) Plot - 1270, Road No.36, Jubilee Hills, Hyderabad - 500033	8897525143

For address and contact numbers of our Johnson Exclusive Showrooms and Authorized Retailers, please visit our website [www.hrjindia.com](http://www.hrjindia.com)

[www.enduratile.com](http://www.enduratile.com)

Toll Free No.: 1800-210-7484 WhatsApp No.: +91 84510 57484

Email: [tiles.customercare@prismjohnson.in](mailto:tiles.customercare@prismjohnson.in)

For Export Enquires, Email: [exports.customercare@prismjohnson.in](mailto:exports.customercare@prismjohnson.in)



## PRISM JOHNSON LIMITED

### H & R JOHNSON (INDIA) DIVISION

**Corporate Office:** "Rahejas", Main Avenue, 3rd Floor, V. P. Road,  
Santacruz (W), Mumbai - 400 054

**Website:** [www.hrjohnsonindia.com](http://www.hrjohnsonindia.com)

**Registered Office:** 305, Laxmi Niwas Apartments, Ameerpet,  
Hyderabad - 500016, Telangana, India.

 HRJIndia  @hrjohnsonofficial  Hrjohnsonindia  hrjohnson\_india

 h-&-r-johnson-india-prism-johnson-limited  HRJohnsonIndia1